

## Jumper Setting Blacky Series 1, 2 & 3

There are two groups of pin headers including 2 mini jumpers in the inner of the Blacky devices. These jumpers permit you to separate the remote signal and the source of the control indicator LED from PIN 4 and PIN 5 of the XLR panel jack and plug.

The right jumper setting is important for all operating modes. Interruptions are possible if the jumper setting is wrong.

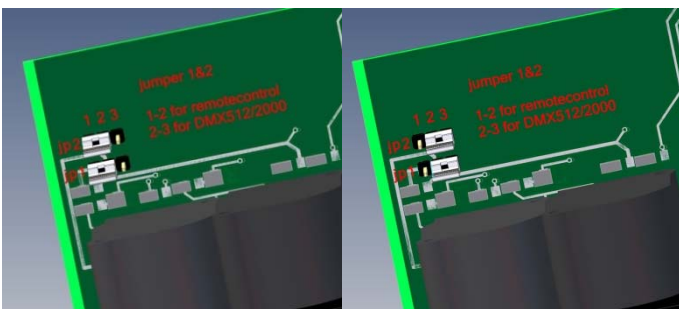
**Jumper 1** is disconnecting the gate input of the remote control (PIN 4 of the XLR-jack & plug)

**Jumper 2** is disconnecting the current source for the indicator LED (PIN 5 of the XLR-jack & plug)

### DMX mode (3 wire cable structure )

Jumper 1+2 auf 1-2 default or

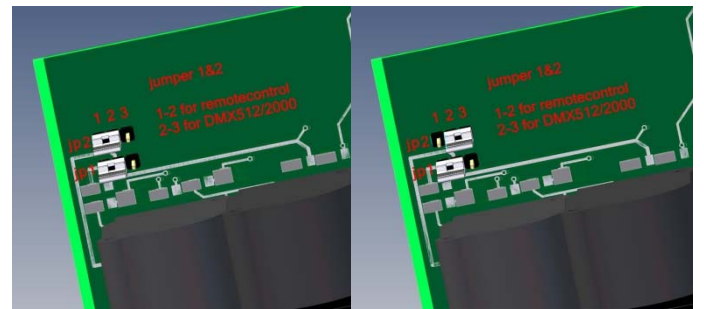
Jumper 1+2 auf 2-3 both possible



### Master-Slave mode (cascading)

Master-device Jumper 1 + 2 at 1-2 default

Slave-device Jumper 1 at 1-2 and Jumper 2 at 2-3

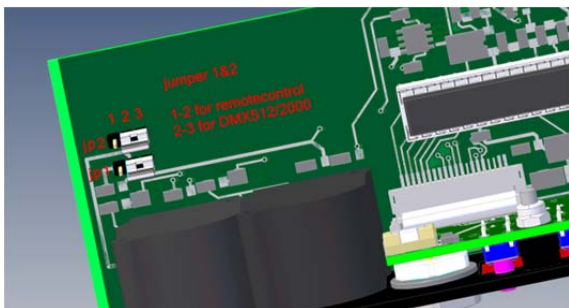


Master

Slave

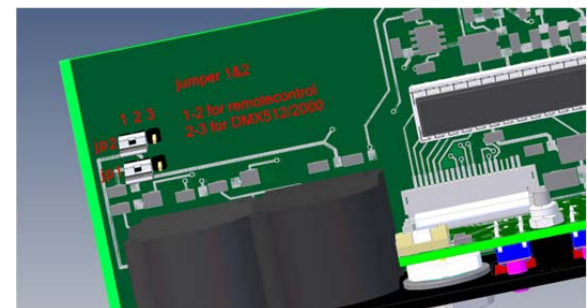
### DMX mode (5 wire cable structure)

Jumper 1+2 at 2-3



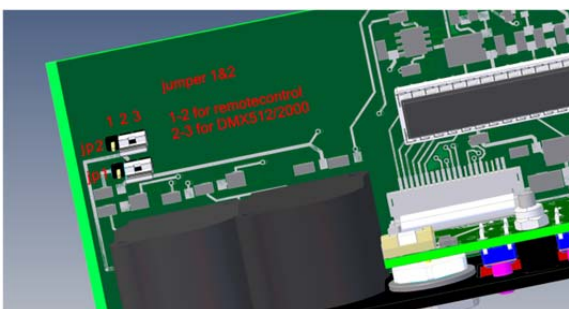
### remote control mode

Jumper 1+2 at 1-2 default



### DMX mode with back channel

Jumper 1+2 at 2-3



### Isolated contact mode

Jumper 1 at 1-2

Jumper 2 at 2-3

